

MAXIM WAKULTSCHIK

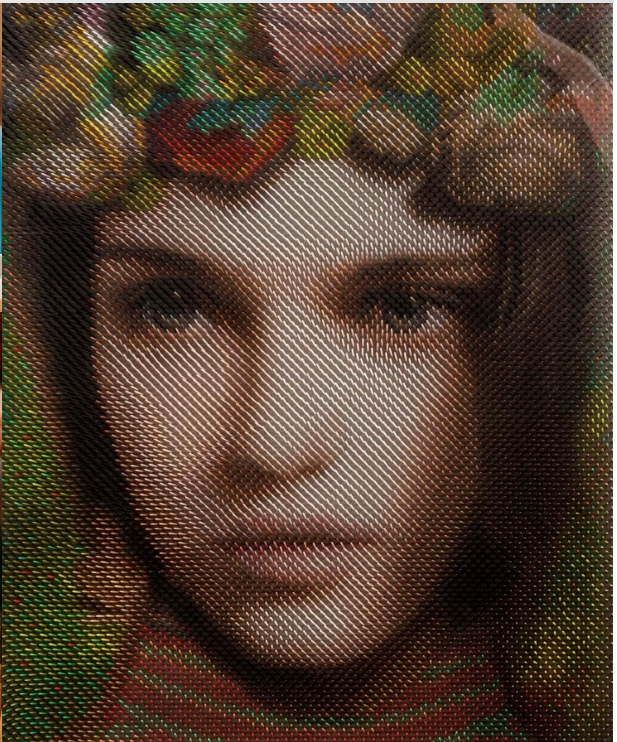
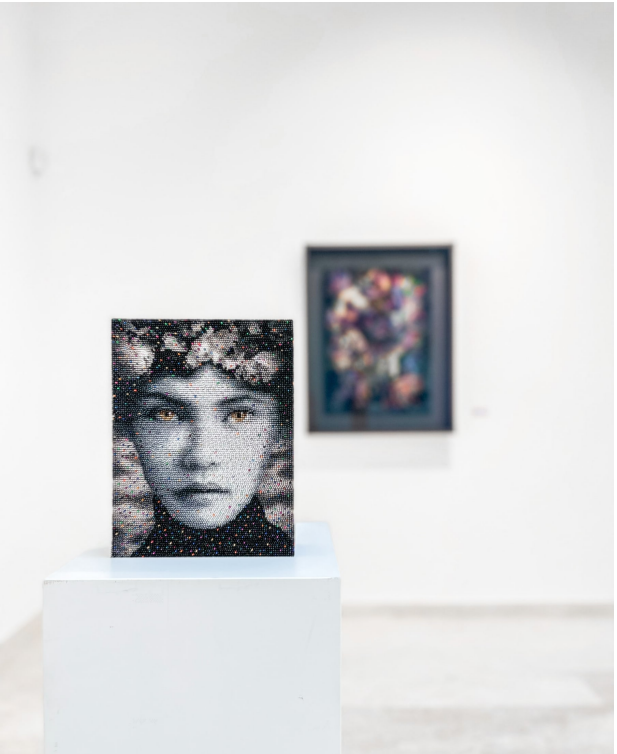
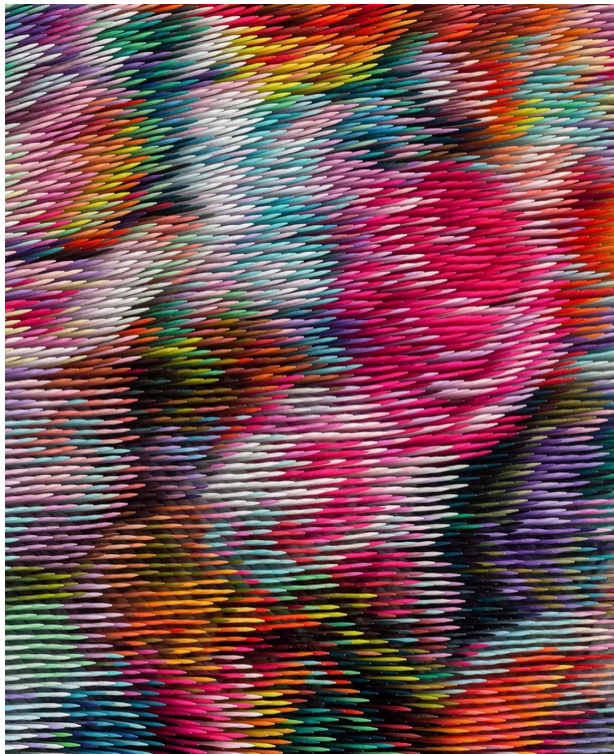
1973, Minsk, Belarus

1990, Gerrit Rietveld Academy, Amsterdam

Works and lives in Düsseldorf, Germany

Belarusian artist Maxim Wakultschik started his artistic journey at the Art Academy of Düsseldorf from where he has created an impressive international following ever since. Wakultschik's art consists of mathematically precise and accurate constructions that create formal order from a chaos of independent elements. In his complex and multilayered objects, he explores the interplay between light and shadow, surface structure and colour vibration. Focusing on the effect of the reflection of the ambient light results in oscillating variations of reality that constantly challenge us to a proactive approach.

His works perpetually change at the slightest movement -the smallest alteration in perspective leads to stunning new impressions, turning his works into kinetic objects. The edges of reality and illusion are blurred and become flexible constructs of the individual, which constantly challenge us to push the boundaries of our perception and to seek inspiration within the smallest of details.



DUCATI

199 -

unstakademie Düsseldorf | Düsseldorf | Germany studies of painting and Drawing with professor Annis
ounellis and professor Beate Schiff

19 - 1991

Belarusian Lyceum of Fine Arts | Minsk | Belarus

AWARDS

9

WIT H Recognition Award Kunstpreis Licht 9 Graefelfing Germany

pecial Prize for Originality Kunstpreis Wesseling Wesseling Germany

Award of D Bank Rhein- uhr Düsseldorf Germany

1

Art Award of Sparkasse Bayreuth Bayreuth Germany

Young Art Award of Stadtwerke Herne AG Herne Germany

mpire Art Award W-Forum Kultur und Wirtschaft Düsseldorf Germany

Aspar von Umbusch Award Herbrock-Larhorst Germany

-Galerie Award Düsseldorf Germany

19 7

Third Prize at the Union Competition Diploma Moscow Russia

S L XHI ITI S

19

Polymorphismus | Städtische Galerie "sohle 1" | Bergkamen | Germany
Reflektieren, Flimmern, Rieseln | Galerie Seidel | Cologne | Germany
Shape Shifting | Städtische | Galerie Schwabach | Schwabach | Germany
Perception | ART Galerie 7 | Meike Knüppe | Cologne | Germany

1

In and Out of Focus | COVA Art Gallery | Het Archief | Eindhoven | The Netherlands
Architecture Meets Art | Galeria Simon Nolte | Burkhard Reinsch's Villa La Vida | Majorca | Spain
One Thousand and One | Anya Tish Gallery | Houston | Texas | USA
The New Art Order | Christian Marx Galerie | Düsseldorf | Germany
Trugbild oder Täuschung | Galerie Seidel | Cologne | Germany
The Illusion of Perception | Von Fraunberg Art Gallery | Düsseldorf | Germany

17

Neue Werke | Galerie Simon Nolte | Münster | Germany
Blurred Boundaries | COVA Art Gallery | Eindhoven | The Netherlands
Maxim's World of Art | Art Galerie 7 | Meike Knüppe | Cologne | Germany
Malerei | Galerie an der Pinakothek der Moderne | Barbara Ruetz | Munich | Germany

1

Neue Werke von Maxim Wakultschik | Galerie Simon Nolte Münster | Germany
Perspective Three, TRIBU HOUSE, Geneva, Switzerland
Monuments | Christian Marx Galerie | Düsseldorf | Germany

1

Art meets Fashion | Inline unlimited | Von Fraunberg Art Gallery | Düsseldorf | Germany
Porträt, Form, Farbe, Illusion | NEW AG | Mönchengladbach | Germany
Faces | Unique Gallery | Galerie Claudia Junig | Cologne | Germany
Facetime 2.0 | Galeria Simon Nolte | Portocolom | Majorca | Spain

2014

Der heimliche Blick | Alte Honigfabrik | Kunstverein Ibbenbüren | Ibbenbüren | Germany
Der zweite Blick | Galerie Palais Walderdorff | Gesellschaft für Bildende Kunst Trier | Trier | Germany
Von Angesicht zu Angesicht | Museum im Haus Hövener | Brilon | Germany
Face Time | Galeria Simon Nolte | Portocolom | Majorca | Spain
Face Time | Galerie Michael Nolte | Münster | Germany
Die Poesie des Alltags | Kunstverein Aurich | Aurich | Germany
Zeitfenster | Kunstverein Gundelfingen | Gundelfingen | Germany
Malerei und Objekte | Kunstverein Heidenheim a. d. Brenz | Heidenheim a. d. Brenz | Germany
The Art of Shadow | Kunstverein Nümbrecht | Nümbrecht | Germany
Face to Face | Alte Brennerei | Kunstverein Ebersberg | Ebersberg | Germany

13

Nachtzug nach Moskau | Kunstverein Biberach | Biberach | Germany
Maxim Wakultschik | Galerie Frank Pages | Geneva | Switzerland
New Objects | Von Fraunberg Art Gallery | Düsseldorf | Germany
Hall of Fame, Christian Marx Galerie, Düsseldorf, Germany
Trainspotting | Municipal Gallery | Versandhalle Grevenbroich | Grevenbroich | Germany
Face Time | Anya Tish Gallery | Houston | Texas | USA

Schilderijen en Wandobjecten | Galerie BMB | Amsterdam | The Netherlands
Maxim Wakultschik | Roland Gallery | Cologne | Germany
Peintre, Plasticien | The Raymond Banas Art Gallery and House of Culture | Metz | France

12

Der heimliche Blick | Kunstsammlungen der Stadt Limburg | Limburg a. d. | Lahn | Germany
Wirklich – Nicht Wirklich | Kunstverein Barsinghausen e.V. | Barsinghausen | Germany

11

Ost-West Nachtzug | Städtische Galerie Petershagen | Petershagen | Germany
Malerei | Turmgalerie Schloss Augustusburg | Augustusburg | Germany
Maxim Wakultschik – Malerei | Galerie an der Pinakothek der Moderne | Barbara Ruetz, Munich, Germany

2010

Ambivalences | Galerie Michael Nolte, Münster, Germany
Maxim Wakultschik – East-West Night Train | Von Fraunberg Art Gallery | Düsseldorf | Germany
Schein und Wirklichkeit | Kunstverein Oberhausen | Oberhausen | Germany

2009

Maxim Wakultschik – East-West Night Train | Von Fraunberg Art Gallery | Düsseldorf | Germany

2007

Deception | Burkhard Eikermann Com | Düsseldorf | Germany
Deception | Kunsthalle Neuufer am Park | Pirmasens | Germany

2006

Dualities | Anya Tish Gallery | Houston | Texas | USA
Snare | Kunstraum Glashaus | Düsseldorf | Germany

2005

Identity | Galerie Seidel | Cologne | Germany

2004

Neue Arbeiten | Municipal Gallery Blaushaus | Xanten | Anya Tish Gallery | Houston | Texas | USA

2003

Face to Face | Galerie Studio 40 | Düsseldorf | Germany

2002

Vorbild Mensch | Kunst & Museum | Hollfeld | Germany

2001

Neue Arbeiten | HWL Galerie und Edition | Düsseldorf | Germany
Art Drei Räume | Kunsthaus Mettmann e.V. | Mettmann | Germany

GROUP EXHIBITIONS

2021

Impulse | Impulse Gallery | Lucerne | Switzerland

2019

Sonne, Mond und Sterne - Das kleine Format | ART Galerie 7 / Meike Knüppe | Cologne | Germany
The Edit | The House of Fine Art | London | UK
Holz – Körper – Kontext | Städtische Kunstgalerie Wertingen | Wertingen | Germany
Holz – Stein – Eisen – Kunststoff | Bürgermeisterhaus | Essen | Germany
Artist Night - Nacht der Galerien und Museen in Münster | Galerie Simon Nolte | Münster | Germany
Art Ruhr Zeitgenossen | Auktionshaus an der Ruhr | Mülheim a.d. | Ruhr | Germany
Summer Contemporary 2019 | The House of Fine Art | Nammos Village | Mykonos | Greece
Viva Frida! An Homage to Frida Kahlo | Go Gallery | Amsterdam | The Netherlands
Flowing Colors | Von Fraunberg Art Gallery | Taylor Wessing | Düsseldorf | Germany
Academy Artists | Quirin Bank | Düsseldorf | Germany
RARITY SUMMER CONTEMPORARY 2019 | Rarity Gallery | Mykonos | Greece
Personal Structures / Open Borders | ECC European Cultural Centre | 58th Venice Biennale | Venice | Italy
Belkina, Dóka, Wakultschik: Portraits and Storytelling | Faur Zsófi Galéria | Budapest | Hungary
Behind | Galerie Simon Nolte | Münster | Germany
1x1 Detonation | Galerie Seidel | Cologne | Germany

2018

Third Dimension | Galerie Simon Nolte | Münster | Germany
The Power of Portraits | Christian Marx Galerie | Düsseldorf | Germany
Q V A N T U M | HOFA Gallery | West Hollywood | California | USA
ZBOR In Progress | Y Gallery | Minsk | Belarus
Q V A N T U M | HOFA Gallery | London | UK
FO YOU Voluntary Art Liaison | Berlin | Germany
42 Contemporary Artists | EAF Enter Art Foundation | Berlin | Germany
U_K Bang_Gang | Düsseldorf Cologne Open Galleries | Düsseldorf | Germany
Nacht der Museen und Galerien | Galerie Simon Nolte | Münster | Germany
XIX Trialog with Krynkach | Belarusian Outside | Fundacja Villa Sokrates | Krynk | Poland
Todos Podem Ser Frida | All can be Frida | Espacio Gallery | London | UK
Way to the East | Art Center La Recova | Santa Cruz de Tenerife | Canary Islands | Spain
Heimat | Galerie Simon Nolte | Münster | Germany
Summer 2018 | Galleria Simon Nolte | Portocolom | Majorca | Spain
RARITY SUMMER CONTEMPORARY 2018 | Rarity Gallery | Mykonos | Greece
Zeitgeist | Galerie Simon Nolte | Münster | Germany
Das Große Format | Art Galerie 7 / Meike Knueppe | Cologne | Germany

2017

Neue Werke | Galerie Simon Nolte | Münster | Germany
All In | Von Fraunberg Art Galerie | Düsseldorf | Germany
Masterpieces | Christian Marx Galerie | Düsseldorf | Germany
Defragmentation of the Reality | Galerie Seidel | Cologne | Germany
Salondergegenwart | Hamburg | Germany
Das Kleine Format | Art Galerie 7 / Meike Knueppe | Cologne | Germany
Biało – Czerwono – Biali | Współczesna Sztuka Białoruska | Contemporary Belarusian Art | Centre of Contemporary Art | Torun | Poland
MONOCHROME – Art Utilizing Primarily One Color | M A N I F E S T | Non-Profit Creative Research Gallery and Drawing Center | Cincinnati | Ohio | USA
Discover As On A Journey | Von Fraunberg Art Gallery | Düsseldorf | Germany
Uitnodiging | COVA Art Gallery | Eindhoven | The Netherlands

Gruppenausstellung Zu Den Skulptur Projekte in Münster | Galerie Simon Nolte | Münster | Germany
Skulptur, Objekte | Christian Marx Galerie | Düsseldorf | Germany
RARITY SUMMER CONTEMPORARY 2017 | Rarity Gallery | Mykonos | Greece
WE THE WOMAN | Atelier des Bains | Geneva | Switzerland
Unzertrennlich | Galerie Seidel | Cologne | Germany
Happy New Drawings and Other Objects | Gallery Burkhard Eikermann | Düsseldorf | Germany

2016

Now U See It's Xmas Season | Von Fraunberg Art Gallery | Düsseldorf | Germany
Weihnachtsausstellung | Stiftung Starke | Löwenpalais Grunewald | Berlin | Germany
Pure Pop – The Art of Popular Culture | Christian Marx Galerie | Düsseldorf | Germany
50 Contemporary Artists | ENTER ART FOUNDATION bei ABC Berlin | Berlin | Germany
Art After Work | Kunstakademie.gallery | Düsseldorf | Germany
Zeitgeist | Galerie Simon Nolte | Münster | Germany
Riss oder Spaltung? | Galerie Seidel | Cologne | Germany
XX Part One – 20th Anniversary Exhibition | Anya Tish Gallery | Houston | Texas | USA
Revision | ZBOR. BELARUSIAN ART MOVEMENT in IZOLYATSIA | Platform for Cultural Initiative | Kiev | Ukraine
SaisonstArt | Galeria Simon Nolte | Portocolom | Majorca | Spain
SUPREME Skulptur – Malerei – Installation | Art Galerie 7 / Meike Knüppe | Cologne | Germany
Pixel of Identities – The Body Language | Bogota Arte Contemporaneo BAC Gallery | Bogotá | Colombia
Liquid Rooms – The Labyrinth | Palazzo Ca' Zanardi & VENICE ART HOUSE Gallery | Venice | Italy

2015

Gallery Artists | Von Fraunberg Art Gallery | Düsseldorf | Germany
100 Jahre Schwarzes Quadrat von Kazimir Malevich | 10 Künstler x 10 m2 Kunst | 20th Gallery Anniversary Show | Galerie Seidel | Cologne | Germany
Grand Opening | Christian Marx Galerie | Düsseldorf | Germany
Neue Werke | Galerie Simon Nolte | Münster | Germany
KunstBoulevard 2015 | Malerei und Fotografie | Cultural Council Steg-litz-Zehlendorf | Berlin | Germany
#BYOA #Proudcollector | Woeske Gallery | Berlin | Germany
Revision | Foundation Izolyatsia | Platform for Cultural Initiatives | Kiev | Ukraine
ZBIÓR | Group project Revision | Galeria Arsenał | Białystok | Poland
Magie Des Realen | Galerie Simon Nolte | Münster | Germany
Naked | Nave Gallery Annex | Somerville | Massachusetts | USA
Hinter Kulissen | Christian Marx Galerie | Düsseldorf | Germany
Future Identities – Bodies. Places. Spaces | Laura Haber Art Gallery | Buenos Aires | Argentina
Future Identities – Bodies. Places. Spaces | Art Festival Palazzo Radetzky | Milan | Italy
Saisonart 4.0 | Galeria Simon Nolte | Portocolom | Majorca | Spain

2014

Portfolio: Wirklichkeit und Illusionen | Galerie Seidel | Cologne | Germany
MODERN VENUS | Kunstraum Gerdi Gutperle | Viernheim | Germany
Männerwelten | Kunstverein Burgwedel-Isernhagen | Isernhagen | Germany
NordArt 2014 | KiC Kunst in der Carlshütte | Büdelsdorf | Germany
Myth & Muse | an Homage to Frida Kahlo | GO Gallery | Amsterdam | The Netherlands
Unter 4 Augen – Sprache des Portraits | Altes Rathaus | Kunstkreis Gräfel-fing | Gräfel-fing | Germany
AFTER THE FAIR & NEW POSITIONS | Von Fraunberg Art Gallery | Düsseldorf | Germany
Gallery's Choice | Von Fraunberg Art Gallery | Düsseldorf | Germany
No Time Like the Present | Anya Tish Gallery | Houston | Texas | USA
Small But Just in size | BESPOKE | Düsseldorf | Germany
20 Jahre Galerie Ruetz – Jubiläumsausstellung | Galerie an der Pinakothek der Moderne | Munich | Germany
Menschentraume | Galerie Seidel | Cologne | Germany

2012

New Works | Galerie an der Pinakothek der Moderne | Barbara Ruetz | Munich | Germany
Auf der ewigen Reise | E.ON Galerie | E.ON AG | Düsseldorf | Germany
NEWart.21 | Galeria Simon Nolte | Portocolom | Majorca | Spain
Nomaden | CMG Christian Marx Galerie | Düsseldorf | Germany
Schauraum – Das Fest der Museen und Galerien in Münster | Galerie Simon Nolte | Münster | Germany
Summertime | Von Fraunberg Art Gallery | Düsseldorf | Germany
Radius Null | Temporäre Space | Fabrik „Horizont“ | Minsk | Belarus
Gallery Artists | Galerie Frank Pages | Geneva | Switzerland
Gallery 212 | Miami | Florida | USA
OPEN HOUSE 2012 | Galerie Michael Nolte | Münster | Germany
Die Schlossanlage | Castle Gomel | Gomel | Belarus
3 Year Anniversary | Christian Marx Galerie | Düsseldorf | Germany

2011

In between Days | Von Fraunberg Art Gallery | Düsseldorf | Germany
New States of Contemporary Art | Galerie Michael Nolte | Münster | Germany
Review und Ausblick – 7 Jahre Galerie T40 | Galerie T40 | Düsseldorf | Germany
Gallery Artists | Galerie Frank Pages | Crans-Montana | Switzerland

2010

Ambivalences | Galerie Michael Nolte | Münster | Germany
Mobilität 6: Inside Movement | Förderverein für junge Künstler e. V. – Galerie im Gries-bad | Ulm | Germany
ON WHAT? | Anya Tish Gallery | Houston | Texas | USA
Seewerk 2010 | Das SEEWERK | Moers | Germany
Gallery Artists | Galerie Michael Nolte | Münster | Germany
Revision Group | Who is afraid of the Museum? | Museum Hof van Busleyden | Mechelen | Belgium
Gallery Artists | Galerie Frank Pages | Baden-Baden | Germany

2009

Public Inside | Von Fraunberg Art Gallery | Düsseldorf | Germany
Closely Watched Trains | Anya Tish Gallery | Houston | Texas | USA
Light Switch | Anya Tish Gallery | Houston | Texas | USA
Krieg der Engel – Junge russische Kunst | Galerie Oben, Chemnitz | Germany
Gallery Artists | Galerie Ruethmueller Contemporary Art | Basel | Switzerland
Revision Group | The simple Art of Parody | Museum of Contemporary Art | Taipei | Taiwan
Switch on – Gräfelfing | Kunstkreis Gräfelfing | Germany
Wer bin ich? | Bürgerhaus Hürth | Hürth | Germany

2008

Gallery Artists – Recent Works | Anya Tish Gallery | Houston | Texas | USA
Russische Variationen | Stiftung Landdrostei | Pinneberg | Germany
Our Favorites | Berezniysky Gallery | Berlin | Germany
GOOD-BY | Temporary Art Space "Für Fortgeschrittene" | Berlin | Germany
RCS – Russian Contemporary Show | HAN JIN YUN Contemporary Space Gallery | Beijing | China
Belarusian Perspectives | Arsenal Galerie | Białystok | Poland
Jahresgaben | Neuer Aachener Kunstverein | Aachen | Germany

2007

Revision | Berezniysky Gallery Berlin | Berlin | Germany
White | Anya Tish Gallery | Houston | Texas | USA
Revision | Berezniysky Gallery Kiev | Kiev | Ukraine
ART ARSENAL | Municipal Art Forum Arsenal | Kiev | Ukraine
Photo | Christine Hölz Galerie | Düsseldorf | Germany

2006

Dualities | Anya Tish Gallery | Houston | Texas | USA
Gallery Artists | Municipal Gallery Kaarst | Kaarst | Germany
Bewegung | Dynamik und Kraft | Municipal Gallery Schwingeler Hof | Wesseling | Germany
Current Belarusian Art | National Center for Contemporary Art | Moscow | Russia

2005

Gallery Artists | Neue Gesellschaft für bildende Kunst e.V. | Berlin | Germany
Revision | Kunstforum BBK | Düsseldorf | Germany
Co-operative Experience | Galerie Christine Hölz | Düsseldorf | Germany

2004

Neue Arbeiten | Cubus Kunsthalle | Duisburg | Germany
5. Kunstkreuz 2004 | Kulturring in Berlin e.V. | Berlin | Germany
Neue Arbeiten | Karl Ernst Osthaus-Museum | Hagen | Germany

2003

Emprise Art Award 2003 | NRW-Forum | Düsseldorf | Germany
Licht Raum Europa | Reithalle im Klenzepark | Ingolstadt | Germany
Spannungen, Schatten und Licht | Municipal Gallery Schwingeler Hof | Wesseling | Germany
Neue Arbeiten | Museum Baden | Solingen | Germany
12. International Print Biennale | Graphic Art Gallery | Dieter Fischer Galerie | Dortmund | Germany
Eingrenzen, Grenzenlos, Ausgrenzen | Museum Voswinkelshof | Dinslaken | Germany

2002

Emprise Art Award 2002 | NRW-Forum | Düsseldorf | Germany
7. Kunstbombe | Flottmann-Hallen | Herne | Germany
Malzeit | Hetjens Museum Deutsches Keramikmuseum | Düsseldorf | Germany

2001

23. Internationale Hollfelder Kunstaussstellung | Hollfeld | Germany
6. Kunstbombe | Flottmann-Hallen | Herne | Germany

2000

Expo-Project for World Exhibition | Hofanlage | Holzminden | Germany
Netz | Galerie Seidel | Cologne | Germany
Miniatur 2000 | Orangerie Schloss Rheda | Rheda-Wiedenbrück | Germany
Emprise Art Award 2000 | NRW-Forum | Düsseldorf | Germany

1999

Der Mensch als Möglichkeit | Museum im Schloss Fürstenberg | Fürstenberg | Germany